

# STOP Underage Drinking

## Cape May County's Report Card on Underage Drinking 2011

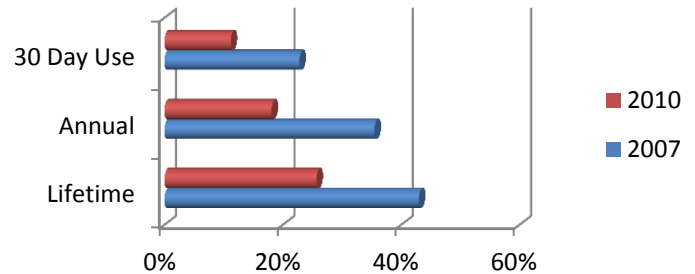


### We have made GREAT progress !!!

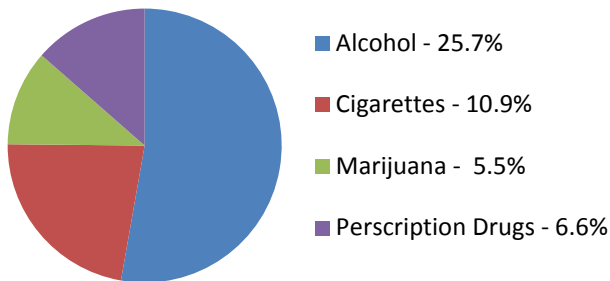
From 2007 to 2010 the following statistics have been reduced:

- \*Lifetime use has gone down by 40%. That means that the amount of students trying alcohol at least once in their life has been reduced.
- \*Middle school student's annual use has been reduced by 49%.
- \*Students that have used alcohol in the past 30 days has gone down by 51%.

### Alcohol use among Cape May County Middle School Students



### Lifetime Use - 2010 CMC Middle School Students



### We need to keep the momentum going . . .

- Alcohol is still the #1 drug of choice in Cape May County.
- The average age of our youth's first drink of alcohol is 11 years old.
- More than 10% of our 7<sup>th</sup> & 8<sup>th</sup> graders have used alcohol in the past month.

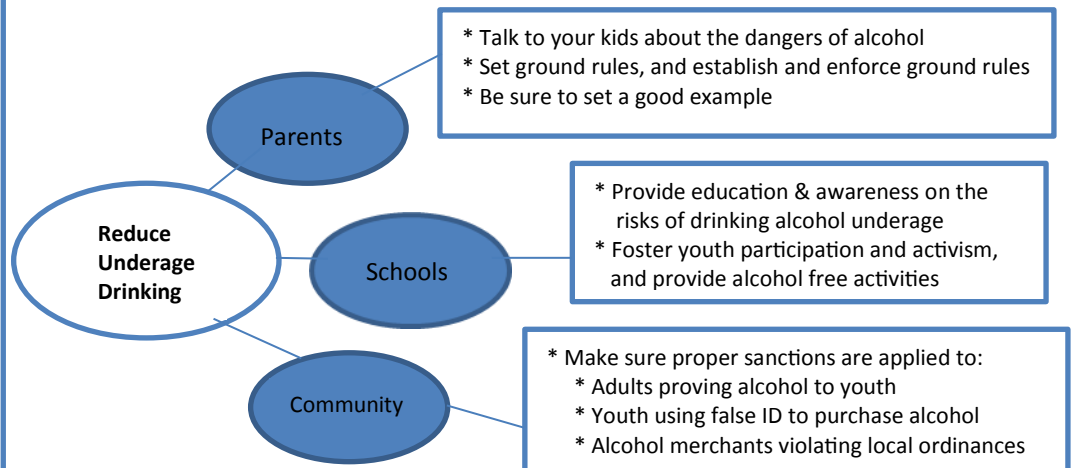
2010 New Jersey Risk & Protective Factor Survey – Cape May County  
NJ Department of Human Services, Division of Addiction Services

### Adolescents are more vulnerable than adults to the many effects of alcohol . . .

Youth that begin drinking before the age of 15 are 5 times more likely to become alcohol dependent than those who wait until the legal age of 21.

- Alcohol has a powerful impact on:
- The ability to form new memories
  - Judgment
  - Decision making
  - Short term memory
  - Impulse Control

### How can we affect Underage Drinking in our communities . . .



3819 New Jersey Avenue, Wildwood, NJ 08260  
Phone: 609-522-5960 / [kim@capeassist.org](mailto:kim@capeassist.org)  
CMC Healthy Community Coalition is a community initiative of Cape Assist.

